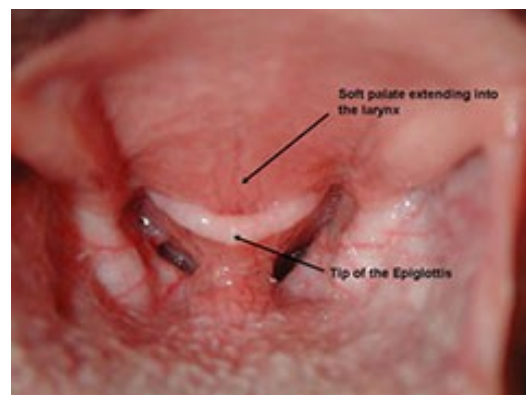
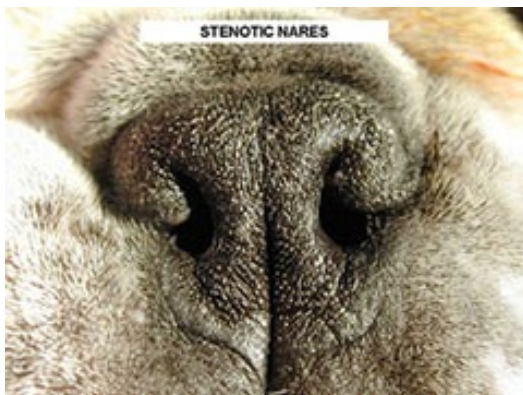


- Brachycephalic Airway Syndrome refers to the combination of elongated soft palate, stenotic nares, brachycephalic breeds (English bulldog, French bulldog, Pug, Pekingese, and Boston terrier, Persian cat).
- These conditions lead to airway obstruction, stridorous breathing and respiratory distress. Concurrent advanced laryngeal collapse often contributes to respiratory distress.
- Stenotic nares resection should be performed once the animal is old enough to be safely anesthetized and the nasal tissues have matured enough to hold sutures (3-4 months).
- **Resection of the soft palate is best performed when the patient is young (4-24 months) before laryngeal cartilage degeneration and collapse.**
- Everted saccules are usually excised at the same time as the soft palate.
- Surgical correction will alleviate signs of respiratory distress and improve quality of life in most patients.

Surgery	Description
Nares, Soft Palate and Saccule Resection	Includes consult, anesthesia, surgery, hospital stay. Does not include preoperative bloodwork or radiographs if indicated.



**If you have any questions, please do not hesitate to contact us.**